

The Yorkshire Cottage series are some of our most picturesque cottages specially designed for smaller properties. This home recalls the cottages dotting the English countryside and the beautiful older suburbs around America's cities. See all our cottages on our web site. The ten foot beamed ceilings on first floor create a country lodge aura. The front motor court maximizes siting options, making a walkout basement possible.

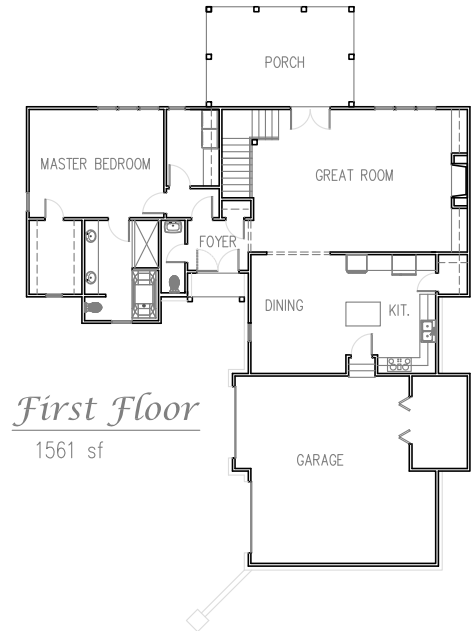
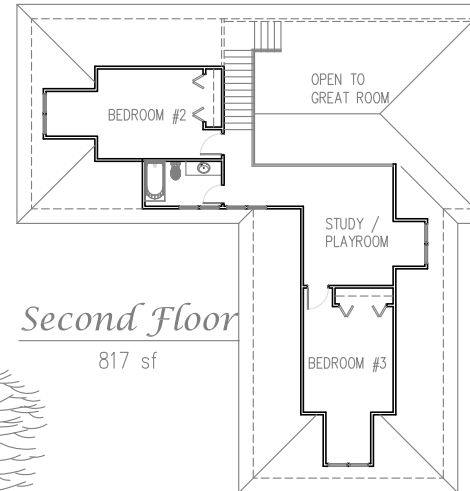
MZA Residential Division Classic Homes Collection

GREENVILLE
PHONE 864-242-9719

SOUTH CAROLINA
FAX 864-271-0919



Front Elevation "B"



FOOTPRINT 57' WIDE x 72' DEEP
THREE BEDROOMS 2378 S.F.
(FOUR BEDROOM 2743 S.F. ALSO AVAILABLE)

GREAT ROOM	18'-0" x 31'
MASTER BEDROOM	13'-8" x 17'
KITCHEN/DINING	15'-8" x 23'-4"
STUDY/PLAYROOM	11'-4" x 13'-4"
BEDROOM #2	11'-4" x 13'-4"
BEDROOM #3	11'-4" x 14'-8"
BEDROOM #4	13' x 18'



Left Side Elevation "B"

Yorkshire I Cottage 2378

COPYRIGHT 2008 MCKAY, ZORN & ASSOCIATES, PA