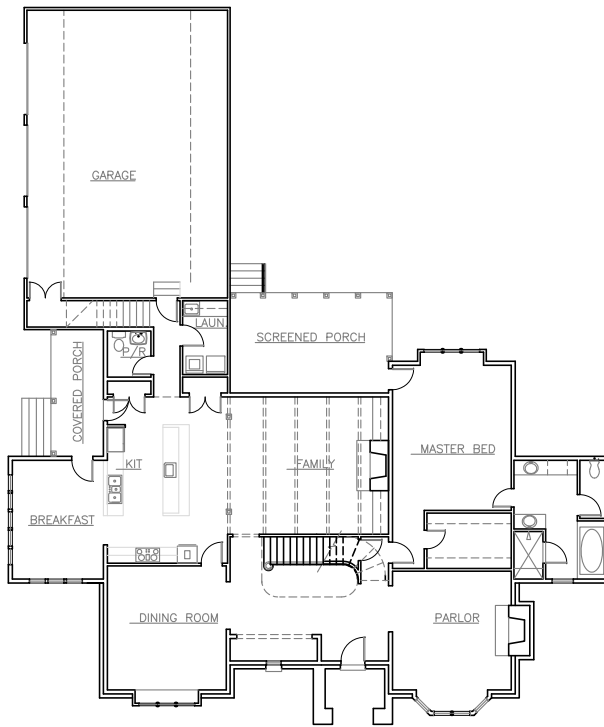


MZA Residential Division Classic Homes Collection

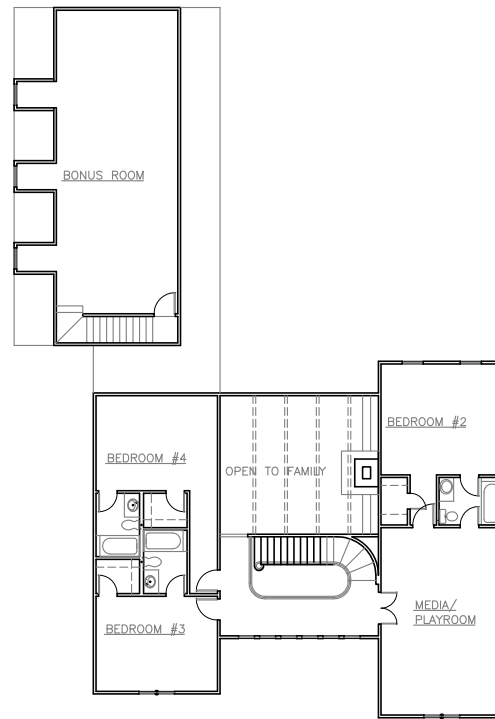
GREENVILLE
PHONE 864-242-9719

SOUTH CAROLINA
FAX 864-271-0919



FIRST FLOOR

2598 S.F. (FRAME)



SECOND FLOOR

1476 S.F. (FRAME)

The Somerset Manor 4029 is a rusticated Tudor style home, perfect for casual living and entertaining. Stone stucco, timbers and brick accents are used in the manner of fine homes from a golden era. The ten foot ceilings and two story family room enhance the spacious feel in all rooms. Numerous large windows flood the rooms with light. This home requires a large wooded lot for best effect.

FOOTPRINT 76' WIDE x 91' DEEP

DINING ROOM	15' x 15'-8"
MASTER BEDROOM	15' x 18'-4"
BREAKFAST	12' x 15'
KITCHEN/FAMILY ROOM	17'-6" x 35'-6"
PARLOR	15' x 15'
MEDIA/PLAYROOM	15' x 23'
BEDROOM #2	14' x 15'
BEDROOM #3	12' x 15'
BEDROOM #4	12' x 15'



SOMERSET MANOR ELEVATION "A"

Somerset Manor 4074

CDPYRITE 2008 MCKAY, ZORN & ASSOCIATES, PA