

# MZA Residential Division Classic Homes Collection

GREENVILLE  
PHONE 864-242-9719

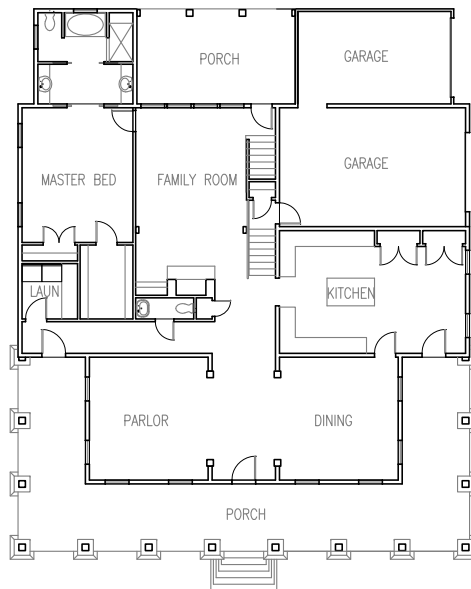
SOUTH CAROLINA  
FAX 864-271-0919



*Front Elevation*

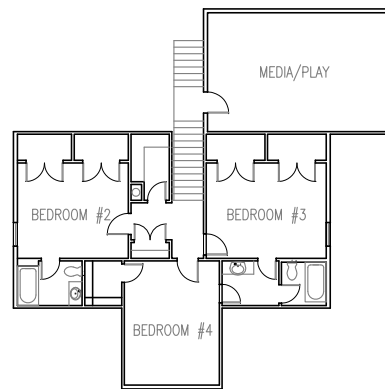
FOOTPRINT 59' WIDE x 70' DEEP  
3620 SF HEATED -FEATURES 12' CEILINGS FIRST FLOOR

PARLOR	15' x 15'-6"
DINING	15' x 15'-6"
KITCHEN	15'-6" x 23'-6"
FAMILY ROOM	14' x 24'
MEDIA/PLAYROOM	15'-6" x 23'-6"
MASTER BEDROOM	14' x 17'
BEDROOM #2	12' x 14'
BEDROOM #3	12' x 15'
BEDROOM #4	12' x 15'-6"



*First Floor*

2248 sf



*Second Floor*

1234 sf

*The Mountain Cove fits beautifully in finer mountain communities or your 100' wide lot. This home features 12' beamed ceilings on the first floor and porches. The playroom/ media room, only a half story above the family room, can also be finished as a fifth bedroom for the larger family. Spacious rooms and porches enhance gracious entertaining and provide the ultimate family home. Stonework, rustic details and heavy timbers on the porches & elsewhere complete the timeless appeal of this home.*

**MOUNTAIN COVE 3620**

COPYRIGHT 2008 MCKAY, ZORN & ASSOCIATES, PA