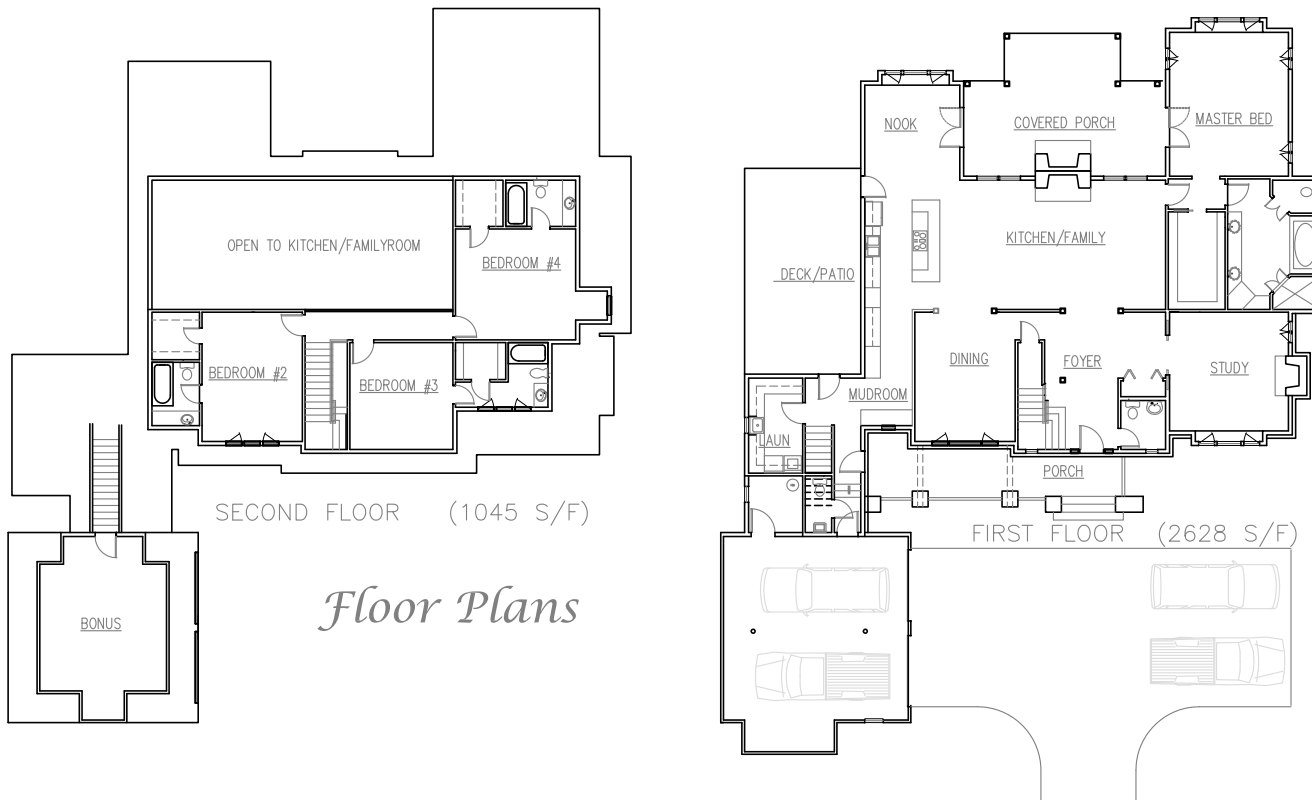


MZA Residential Division Classic Homes Collection

GREENVILLE
PHONE 864-242-9719

SOUTH CAROLINA
FAX 864-271-0919



FOOTPRINT 79' WIDE x 93' DEEP
FOUR BEDROOMS 3673 S.F. HEATED

KITCHEN/FAMILY	16'-4" x 28'
BREAKFAST NOOK	12' x 12'
DINING ROOM	12'-8" x 16'-4"
STUDY	15' x 15'
MASTER BEDROOM	15' x 18'
BEDROOM #2	12'-8" x 16'-4"
BEDROOM #3	12' x 13'-8"
BEDROOM #4	14' x 15'-2"
UNFINISHED BONUS	16' x 16'

ALSO AVAILABLE IN A CRAFTSMAN STYLE



Front Elevation

The Homestead should be built on a larger lot, perhaps on a lake or golf course. The details recall a bygone era of genteel country homes built in the first half of the past century. Because of the front motor court this home will fit well on a 100' wide lot. Come home at the end of the day and relax or entertain in this picturesque beauty. The home features 10' beamed ceilings with overlooks into the vaulted kitchen/family room. The bonus area over the garage can be a teen room or fifth bedroom for the larger family.

Homestead 3673