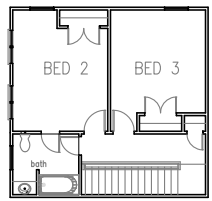


MZA Residential Division Classic Homes Collection

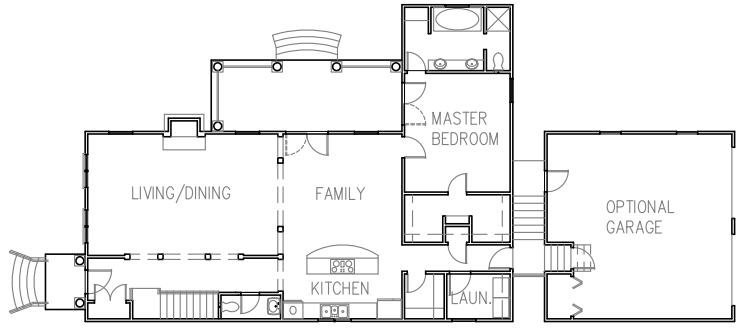
GREENVILLE
PHONE 864-242-9719

SOUTH CAROLINA
FAX 864-271-0919

The Hearthstone 2053 is designed in the Federal style of the late eighteenth century to the mid nineteenth century. This stone version occurs on many fine homes in New England and mid Atlantic. Our version is designed to fit on a 52' wide lot with an alley or may be sited on a 60' wide lot using a side oriented garage.



Second Floor 533 sf



First Floor 1520 sf



Front Elevation



Left Elevation

FOOTPRINT 41' WIDE x 59' DEEP (87' GARAGE)
THREE BEDROOMS -2053 S.F. HEATED

LIVING/DINING ROOM	24'-0" x 15'-4"
KITCHEN/FAMILY	15'-4" x 23'-4"
MASTER BEDROOM	13'-4" x 15'-0"
BEDROOM #2	12'-0" x 13'-0"
BEDROOM #3	12'-0" x 13'-0"

HEARTHSTONE 2053