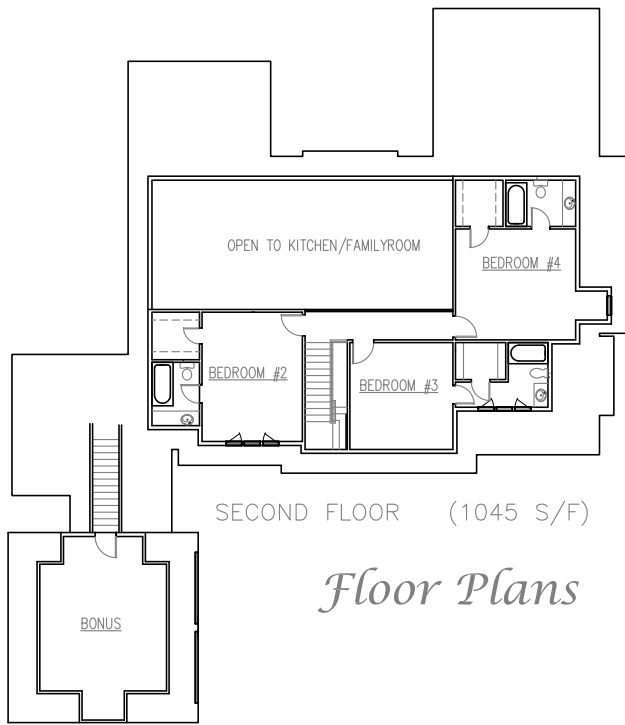


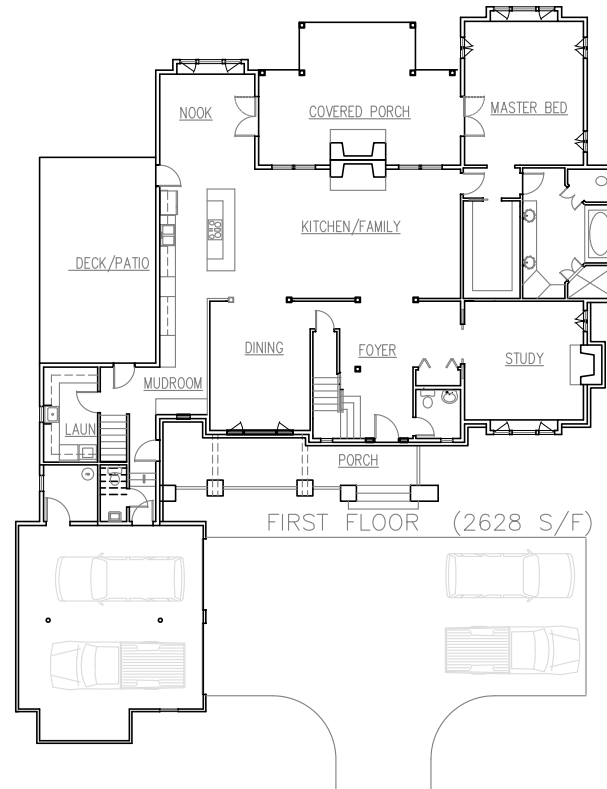
MZA Residential Division Classic Homes Collection

GREENVILLE
PHONE 864-242-9719

SOUTH CAROLINA
FAX 864-271-0919



Floor Plans



FOOTPRINT 79' WIDE x 93' DEEP

FOUR BEDROOMS 3673 S.F. HEATED

KITCHEN/FAMILY 16'-4" x 28'

BREAKFAST NOOK 12' x 12'

DINING ROOM 12'-8" x 16'-4"

STUDY 15' x 15'

MASTER BEDROOM 15' x 18'

BEDROOM #2 12'-8" x 16'-4"

BEDROOM #3 12' x 13'-8"

BEDROOM #4 14' x 15'-2"

UNFINISHED BONUS 16' x 16'

ALSO AVAILABLE IN AN ENGLISH COUNTRY STYLE



Front Elevation

The Craftsman Homestead should be built on a larger lot, perhaps on a lake or golf course. The details recall a bygone era of genteel country homes built in the first half of the past century. Because of the front motor court this home will fit well on a 100' wide lot. Come home at the end of the day and relax or entertain in this picturesque beauty.

The home features 10' beamed ceilings with overlooks into the vaulted kitchen/family room.

The bonus area over the garage can be a teen room or fifth bedroom for the larger family.

Craftsman Homestead 3673