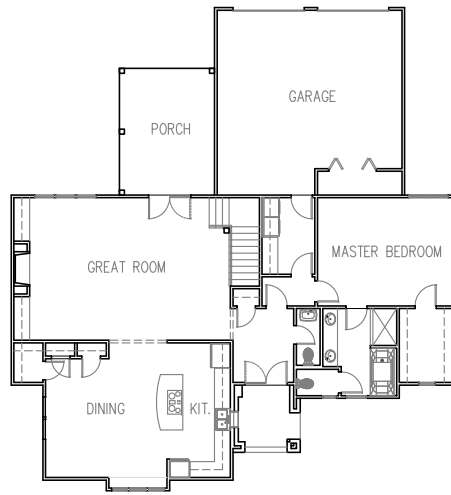


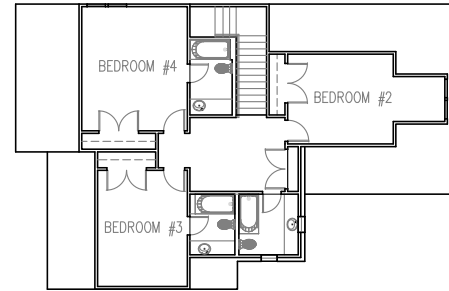
*MZA Residential Division  
Classic Homes Collection*

GREENVILLE  
PHONE 864-242-9719

SOUTH CAROLINA  
FAX 864-271-0919



FIRST FLOOR (1650 sf)



SECOND FLOOR (999 sf)

*Floor Plans*

*The Cotswold Cottage is one of our picturesque cottages specially designed for smaller properties. This home recalls the cottages dotting the English countryside and the beautiful older suburbs around America's cities. See all our cottages on our web site. The ten foot beamed ceilings on first floor create a country lodge aura. Depending upon site and preference, the garage may face rear or side.*

FOOTPRINT 57' WIDE x 62' DEEP  
FOUR BEDROOMS 2649 S.F.  
( AVAILABLE IN THREE BEDROOMS 2309 S.F.)

GREAT ROOM	18'-0 x 31'
MASTER BEDROOM	13'-8 x 17'
KITCHEN/DINING	17' x 23'-4
BEDROOM #2	11'-4 x 19'-8
BEDROOM #3	11'-4 x 14'-8
BEDROOM #4	13'-4 x 15'-8



*Front Elevation*

*Cotswold Cottage 2649*

COPYRIGHT 2008 MCKAY, ZORN & ASSOCIATES, PA