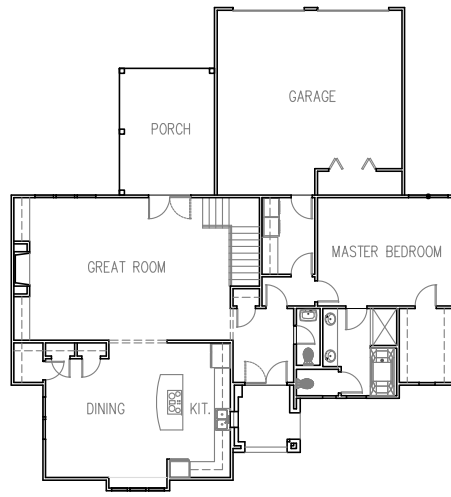


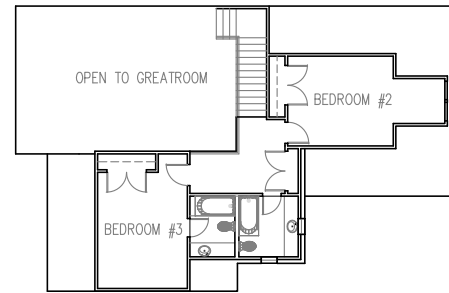
*MZA Residential Division
Classic Homes Collection*

GREENVILLE
PHONE 864-242-9719

SOUTH CAROLINA
FAX 864-271-0919



FIRST FLOOR (1650 sf)



SECOND FLOOR (999 sf)

Floor Plans

The Cotswold Cottage is one of our picturesque cottages specially designed for smaller properties. This home recalls the cottages dotting the English countryside and the beautiful older suburbs around America's cities. See all our cottages on our web site. The ten foot beamed ceilings on first floor create a country lodge aura. Depending upon site and preference, the garage may face rear or side.

FOOTPRINT 57' WIDE x 62' DEEP
THREE BEDROOMS 2309 S.F.
(AVAILABLE IN FOUR BEDROOMS 2649 S.F.)

GREAT ROOM	18'-0 x 31'
MASTER BEDROOM	13'-8 x 17'
KITCHEN/DINING	17' x 23'-4
BEDROOM #2	11'-4 x 19'-8
BEDROOM #3	11'-4 x 14'-8



Front Elevation

Cotswold Cottage 2309

COPYRIGHT 2008 MCKAY, ZORN & ASSOCIATES, PA