

MZA Residential Division Classic Homes Collection

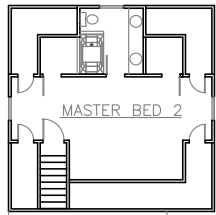
GREENVILLE
PHONE 864-242-9719

SOUTH CAROLINA
FAX 864-271-0919

FOOTPRINT 37' WIDE x 76' DEEP
FOUR BEDROOMS -2657 S.F. HEATED

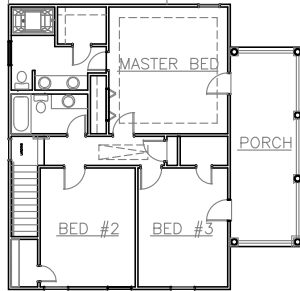
LIVING ROOM	15' x 22'
DINING	13' x 15'
KITCHEN	21'x 23'-4
FAMILY ROOM	14'x 19'-4
MASTER BEDROOM	15' x 16'
MASTER BEDROOM #2	15' x 16'
BEDROOM #3	12'x 15'
BEDROOM #4	11'-4 x 15'

ALSO AVAILABLE WITHOUT GARAGE A THREE BEDROOM 2227 SF VERSION



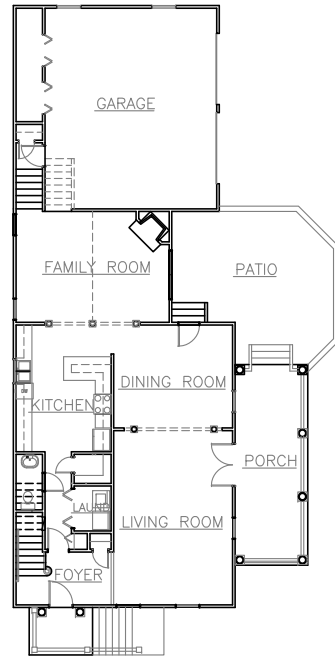
Mid Floor

430 sf



Second Floor

891 sf



First Floor

1336 sf

The Rutledge Avenue is an Italianate Charleston "single style" home. Its exterior details are formal yet have great personal appeal. This home features two master suites to adapt to your lifestyle. It is designed to fit a 60' wide lot with the garage as shown, but fits on a 50' alley access lot by shifting garage doors to the rear. Two bedrooms as well as major downstairs rooms open onto the "double piazza" porch. Ten foot ceilings on both floors complete the ambiance.



Right Side Elevation



Street Front Elevation

RUTLEDGE AVENUE 2657

COPYRIGHT 2008 MCKAY, ZORN & ASSOCIATES, PA