

MZA Residential Division Classic Homes Collection

GREENVILLE
PHONE 864-242-9719

SOUTH CAROLINA
FAX 864-271-0919

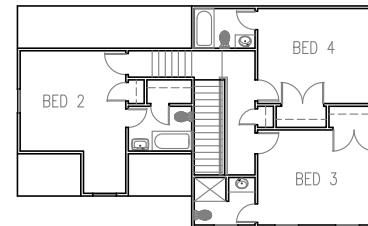


Left Elevation

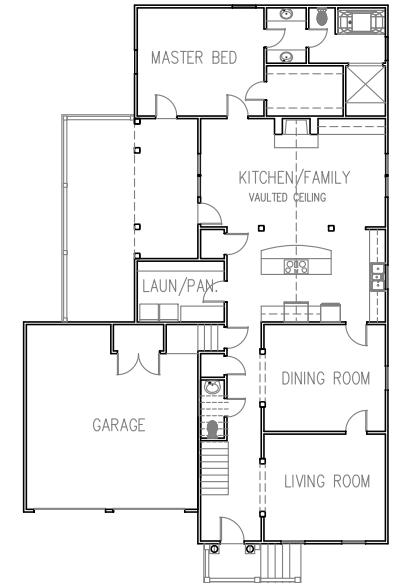
The Queen Street is designed in the Charleston adaptation of the Italianate Style of the mid nineteenth century. It is designed to fit on a front loaded 60' wide lot, but may be adapted with side loaded garage on an 80' wide lot. Similar homes were popular from Georgia to Maine as well as the Ohio Valley.



Front Elevation



Second Floor 950 sf



First Floor 1802 sf

FOOTPRINT 47' WIDE x 75' DEEP
FOUR BEDROOMS -2720 S.F. HEATED

LIVING ROOM	13'-6 x 15'-4
DINING	13'-6 x 15'-4
KITCHEN/FAMILY	25'-8 x 23'-4
MASTER BEDROOM	13'-8 x 16'
BEDROOM #2	12'-8 x 13'-4
BEDROOM #3	15'-4 x 12'
BEDROOM #4	15'-4 x 12'

QUEEN STREET 2752

COPYRIGHT 2008 MCKAY, ZORN & ASSOCIATES, PA