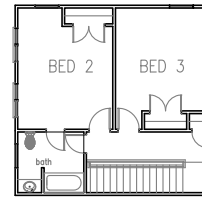


# MZA Residential Division Classic Homes Collection

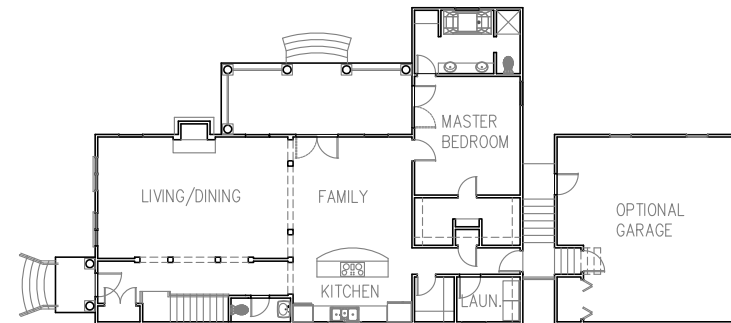
GREENVILLE  
PHONE 864-242-9719

SOUTH CAROLINA  
FAX 864-271-0919

*The Queen Street 2053 is designed in the Charleston adaptation of the Italianate Style of the mid nineteenth century. It is designed to fit on an alley facing 55' wide lot, but may be adapted with side loaded garage on an 80' wide lot. Similar homes were popular throughout America. This home is available in siding (shown) or stucco.*



*Second Floor 533 sf*



*First Floor 1520 sf*



*Front Elevation*



*Left Elevation*

FOOTPRINT 41' WIDE x 59' DEEP (87' GARAGE)  
THREE BEDROOMS -2053 S.F. HEATED

LIVING/DINING ROOM	24'-0" x 15'-4"
KITCHEN/FAMILY	15'-4" x 23'-4"
MASTER BEDROOM	13'-4" x 15'-0"
BEDROOM #2	12'-0" x 13'-0"
BEDROOM #3	12'-0" x 13'-0"

**QUEEN STREET 2053**

COPYRIGHT 2008 MCKAY, ZORN & ASSOCIATES, PA