

MZA Residential Division Classic Homes Collection

GREENVILLE
PHONE 864-242-9719

SOUTH CAROLINA
FAX 864-271-0919

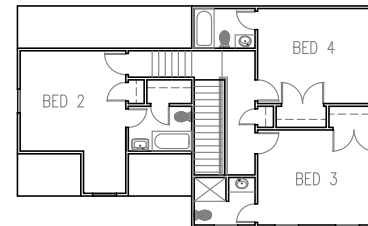
The King Street is designed in the Adam Style of the late eighteenth century to the mid nineteenth century. This style dominated the finest homes up the entire Eastern Seaboard during this era. Our version of this venerable style is designed for a 60' wide lot, and may be adapted to an 80' wide lot using a side loaded garage.



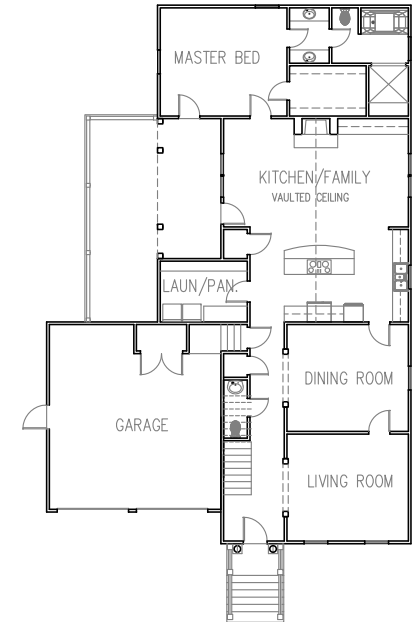
Left Elevation



Front Elevation



Second Floor 950 sf



First Floor 1802 sf

FOOTPRINT 47' WIDE x 75' DEEP
FOUR BEDROOMS -2720 S.F. HEATED

LIVING ROOM	13'-6 x 15'-4
DINING	13'-6 x 15'-4
KITCHEN/FAMILY	25'-8 x 23'-4
MASTER BEDROOM	13'-8 x 16'
BEDROOM #2	12'-8 x 13'-4
BEDROOM #3	15'-4 x 12'
BEDROOM #4	15'-4 x 12'

KING STREET 2752

COPYRIGHT 2008 MCKAY, ZORN & ASSOCIATES, PA