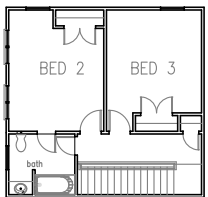


MZA Residential Division Classic Homes Collection

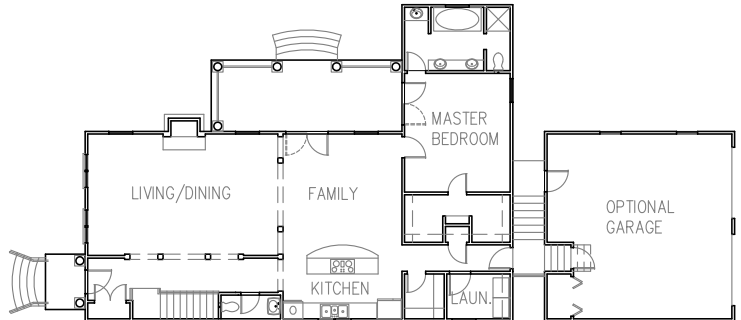
GREENVILLE
PHONE 864-242-9719

SOUTH CAROLINA
FAX 864-271-0919

The King Street is designed in the Adam or Federal style of the late eighteenth century to the mid nineteenth century. This style dominated the finest homes up the entire Eastern Seaboard during this era. Our version of this venerable style is designed to fit on a 52' wide lot with a rear alley or may be adapted to an 60' wide lot using a side loaded garage.



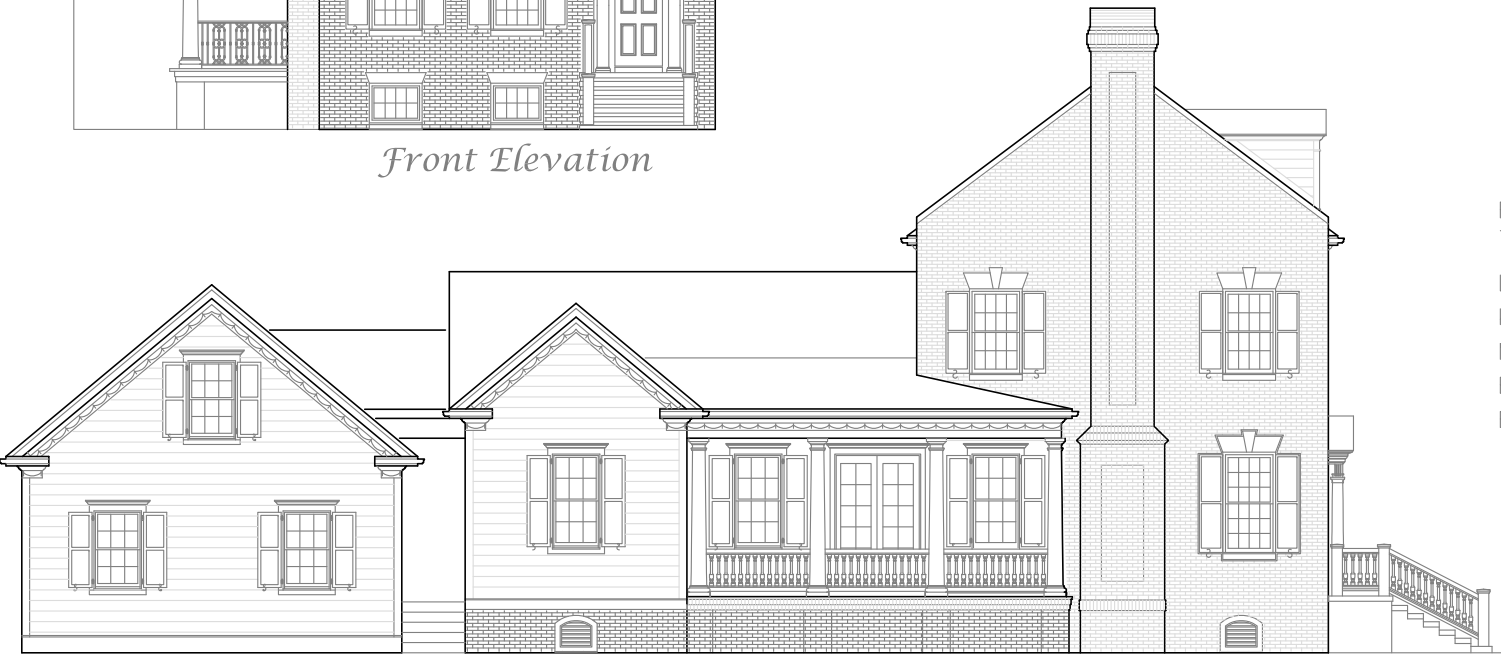
Second Floor 533 sf



First Floor 1520 sf



Front Elevation



Left Elevation

FOOTPRINT 41' WIDE x 59' DEEP (87' GARAGE)
THREE BEDROOMS -2053 S.F. HEATED

LIVING/DINING ROOM	24'-0" x 15'-4"
KITCHEN/FAMILY	15'-4" x 23'-4"
MASTER BEDROOM	13'-4" x 15'-0"
BEDROOM #2	12'-0" x 13'-0"
BEDROOM #3	12'-0" x 13'-0"

KING STREET 2053