

MZA Residential Division Classic Homes Collection

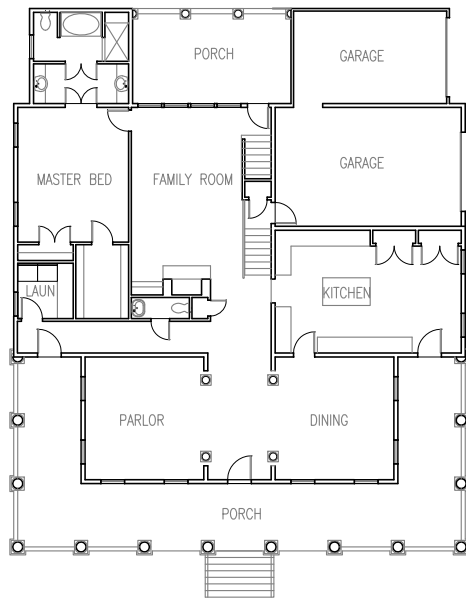
GREENVILLE
PHONE 864-242-9719

SOUTH CAROLINA
FAX 864-271-0919



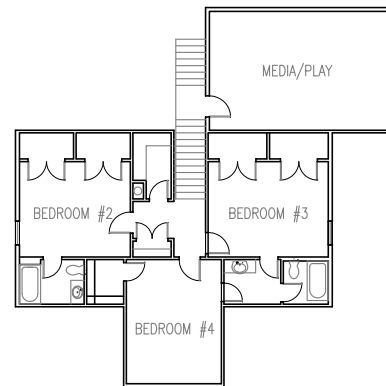
Front Elevation

The Charles Street would fit beautifully in old New Orleans or on your 100' wide lot. This home features 12' coffered ceilings on the first floor and porches. The playroom/ media room, only a half story above the family room, can also be finished as a fifth bedroom for the larger family. Spacious rooms and porches enhance gracious entertaining as well as ultimate family living. Wrought iron balustrades and 12' columns on the porches complete the timeless appeal of this elegant home.



First Floor

2248 sf



Second Floor

1234 sf

FOOTPRINT 58' WIDE x 69' DEEP

THIS HOUSE FEATURES 12' CEILINGS ON FIRST FLOOR
AND HAS FOUR BEDROOMS (3480 S.F. HEATED)

PARLOR	15' x 15'-6"
DINING	15' x 15'-6"
KITCHEN	15'-6" x 23'-6"
FAMILY ROOM	14' x 24'
MEDIA/PLAYROOM	15'-6" x 23'-6"
MASTER BEDROOM	14' x 17'
BEDROOM #2	12' x 14'
BEDROOM #3	12' x 15'
BEDROOM #4	12' x 15'-6"

CHARLES STREET 3620

COPYRIGHT 2008 MCKAY, ZORN & ASSOCIATES, PA