

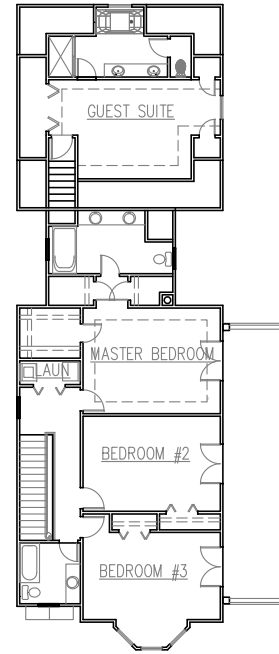
MZA Residential Division Classic Homes Collection

GREENVILLE
PHONE 864-242-9719

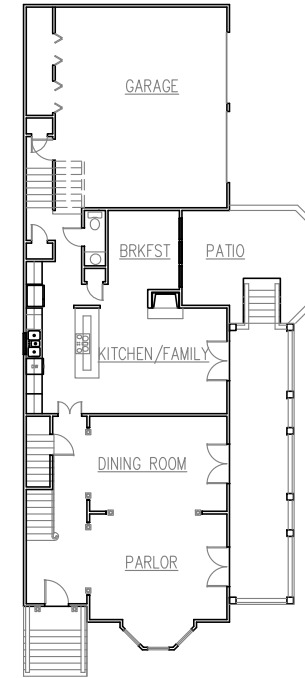
SOUTH CAROLINA
FAX 864-271-0919



Street Front Elevation



Second Floor
(1652 S.F. HEATED)



First Floor
(1317 S.F. HEATED)

FOOTPRINT 35' WIDE x 82' DEEP
FOUR BEDROOMS 3021 S.F.

PARLOR	12' x 17'-4"
DINING ROOM	12' x 17'-4"
KITCHEN/KAMILY	13'-4 x 25'-4"
BREAKFAST	9' x 10'
GUEST SUITE	12'-6 x 21'-8"
MASTER BEDROOM	13'-4 x 17'-4"
BEDROOM #2	12' x 17'-4"
BEDROOM #3	14'-6 x 17'-4"



Side Elevation

The Battery Park is a Charleston "single style" home. It's stucco exterior is formal yet has great personal appeal. This home features two master suites and adapts to any lifestyle. It is designed to fit a 60' wide lot but fits on 50' alley lot by shifting the garage doors to the rear. Six rooms, all with 10' ceilings, open onto the expansive "double Piazza" porch.

BATTERY PARK 3021

COPYRIGHT 2008 MCKAY, ZORN & ASSOCIATES, PA